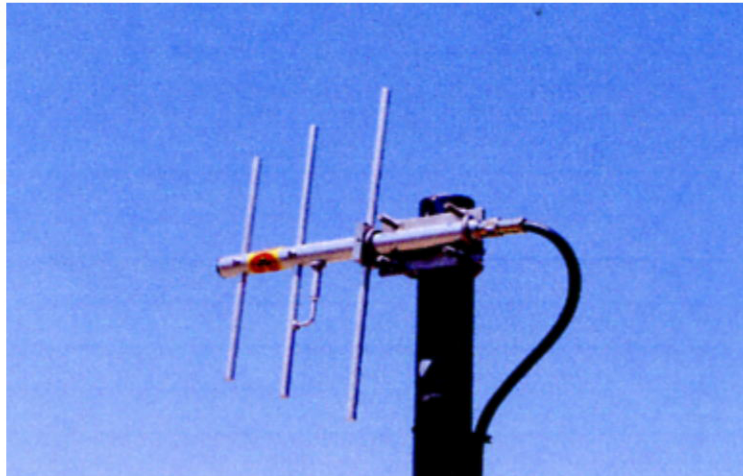
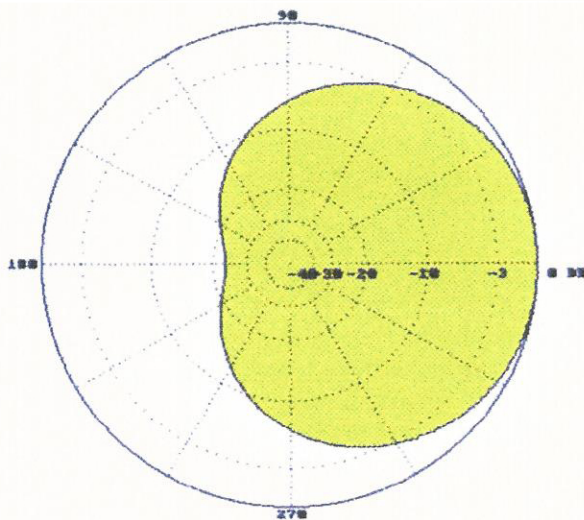


SAMCO ANTENNAS, INC.

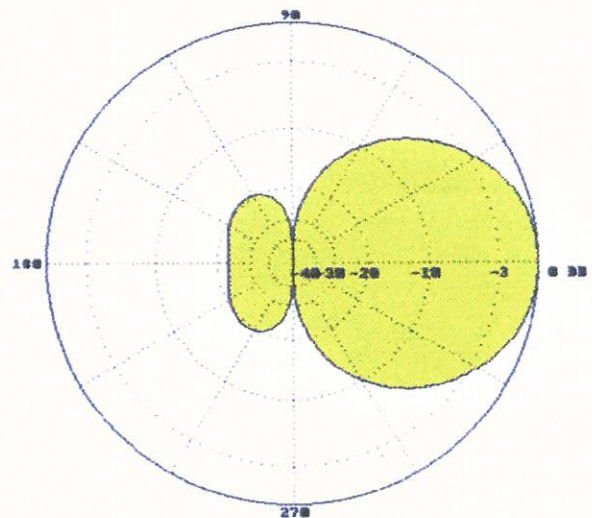


SAM-237R Specifications

Both the E plane and the H plane shown below are normalized at 221 MHz



SAM-237R H-Plane



SAM-237R E-Plane

ELECTRICAL DATA

Frequency 216/224MHz
Bandwidth 8+ MHz
VSWR 1.5 to 1 or less
Impedance 50 ohms
Forward Gain 7 dB
Front to Back Ratio 20 db+
Polarization Vertical or Horizontal
Lighting Protection Direct Ground
Power Handling 300 Watts
Termination Type N Female

MECHANICAL DATA

Materials Aluminum
Boom 1" Reinforced Tube
Elements 3/8" Rod
Driven Element 3/8" Rod
Wind Survival 100 mph
Standard mounting V-bolts 1" to 2" pipe
Overall length 22 inches"
Shipping Weight - Approximately 5 lbs.

PLEASE SPECIFY FREQUENCY